

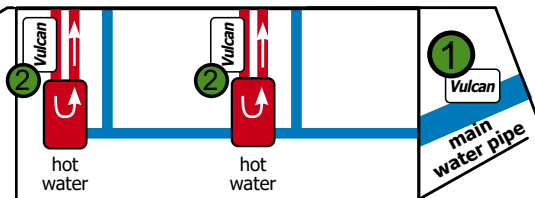
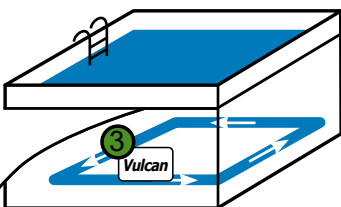
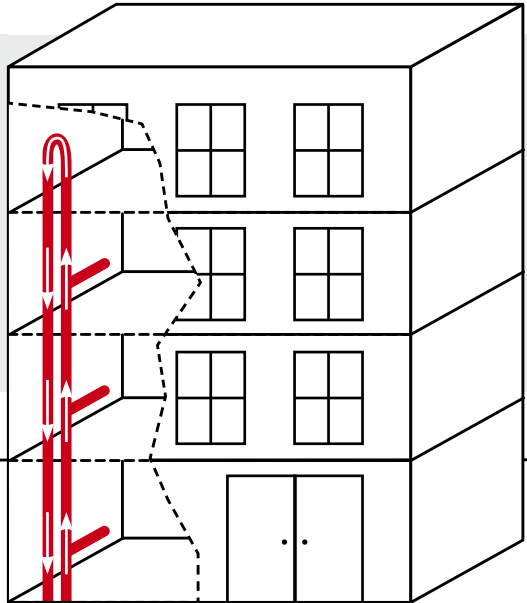


How to install Vulcan in condominiums and large buildings

In larger buildings there are always different areas to consider.
Below is an example of a typical Vulcan installation in a large building.

Installation areas are often the main building cold water supply (1), one or several hot water circulations (2) for the higher floor levels, pool operations (3), etc.
Each water circulation needs an own Vulcan.

- ① Main water pipe
- ② Hot water circulation(s)
(install Vulcan on the return pipe, before the heat exchanger on **each** hot water circulation)
- ③ Pool water circulation
(install Vulcan after the sand filter)





How to choose the right Vulcan size for condominiums and large buildings

For buildings with peak times of high water capacities, you have to choose the following Vulcan size. To choose the right Vulcan model, check the pipe diameter at the main water pipe.

Pipe Diameter	Model
max. 2"	Vulcan S10
2½" - 3"	Vulcan S25
3½" - 4"	Vulcan S50
4½" - 5"	Vulcan S100
5½" - 6"	Vulcan S150
7" - 8"	Vulcan S250
9" - 10"	Vulcan S350
11" - 16"	Vulcan S500

Quality — Made in Germany

- ▶ Manufactured by Christiani Wassertechnik GmbH (CWT) in Germany
- ▶ Over 40 years of experience in physical water treatment
- ▶ Successful in more than 70 countries worldwide
- ▶ 25 years international warranty

